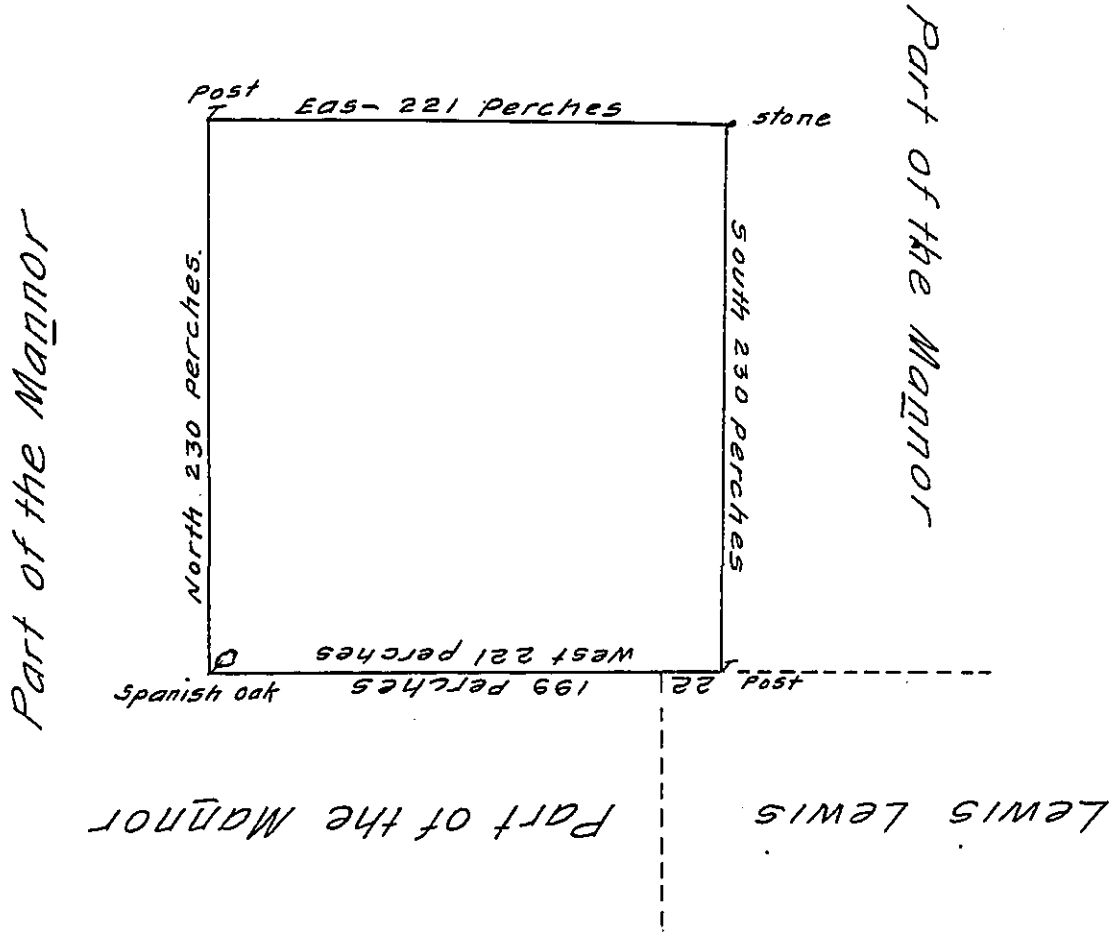


Part of the Mannor



By Direction of the Honourable the Proprietaries I have surveyed to Samuel Thomas the above described Tract of Land Situate in Richland Manor in the County of Bucks Containing Three hundred Acres & allowance of six Acres & Cent for Roads &c.

Nich^o Scull. —

221
 230
 6630
 442
 1696) 50830 (3
 5088
 0

IN TESTIMONY that the above is a copy of the original remaining on file in the Department of Internal Affairs of Pennsylvania, made conformably to an Act of Assembly approved the 16th day of February, 1833, I have hereunto set my Hand and caused the Seal of said Department to be affixed at Harrisburg, this seventh day of June 1910,

Henry Horvath

Secretary of Internal Affairs.